



New ConTex Container Ship Time Charter Assessment Index

New ConTex*		336	
02.06.16		12 mos	24 mos
Gearless	1100 TEU	\$7.291	n.a.
	1700 TEU	\$7.425	
	2500 TEU	\$6.065	
Gearless	2700 TEU	\$6.131	\$7.495
	3500 TEU	\$5.688	\$7.399
	4250 TEU	\$5.195	\$7.357

Legend		
↑	up	+ 2% or more
↗	steady up	from +1% to +1,9%
→	steady	+/- 1 %
↘	steady down	from -1% to -1,9%
↓	down	- 2% or less

*New ConTex evaluation is EXCLUDING 2500/2700/3500/4250 TEU groups for 12 months period

New ConTex-Commentary - issued: 02.06.16

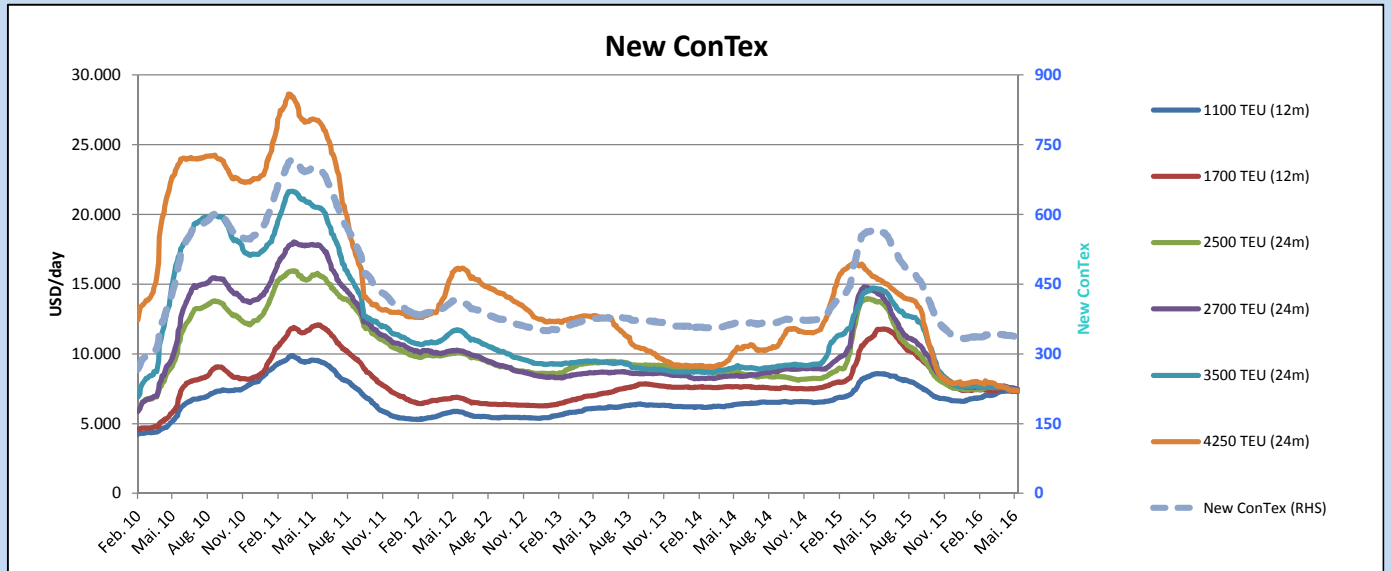
Minor changes characterized this week's New ConTex development, the index lost only 1 point W-O-W. The movements have been only fractions of a percent; therefore we can describe the container chartering market as stable and moving horizontally on a low level.

Activity for the **1100 TEU** geared class was low with only three fixtures reported (all in the Mediterranean Sea). The **1700 TEU** segment showed more activity, especially in Asia, but periods reach only up to 6 months. For the largest geared class (**2500 TEU**) fixtures between \$ 6,000 and \$ 6,500 were reported for periods between 3 weeks and 11 months. Strategic positioning of vessels from Asia/I.O. to the Med/Atlantic to obtain more attractive Charter hires and Charter periods has been observed on several ships.

The three gearless groups of the index also recorded low activity, with the **3500 TEU** class clearly coming in last with only a single reported fixture. Still, the hire level is stable at \$ 5,500 for a flexible period of 3 to 12 months for this group. **Panamax** owners have to make do with short periods and hire levels between \$ 5,000 and 5,500.

The good news for this year is the high level of scrapping. Around 90 vessels are believed to have been committed to breakers with a capacity of around 200,000 TEU, therefore by the end of December the final number could well be above 500,000 TEU.

Vessel type		Evaluated Period	Today	Week-on-Week		Month-on-Month			Year-on-Year			
			02.06.16	26.05.16	Change	Change	03.05.16	Change	Change	02.06.15	Change	Change
New ConTex*			336	337	-1	↔ -0,3%	340	-4	-1,2%	567	-231	-40,7%
New ConTex	1100 TEU	12 mos	\$7.291	\$7.310	-\$19	↔ -0,3%	\$7.322	-\$31	-0,4%	\$8.567	-1.276	-14,9%
	1700 TEU		\$7.425	\$7.456	-\$31	↔ -0,4%	\$7.450	-\$25	-0,3%	\$11.690	-4.265	-36,5%
	2500 TEU		\$7.458	\$7.491	-\$33	↔ -0,4%	\$7.582	-\$124	-1,6%	\$13.742	-6.284	-45,7%
	2700 TEU	24 mos	\$7.495	\$7.515	-\$20	↔ -0,3%	\$7.654	-\$159	-2,1%	\$14.427	-6.932	-48,0%
	3500 TEU		\$7.399	\$7.406	-\$7	↔ -0,1%	\$7.489	-\$90	-1,2%	\$14.672	-7.273	-49,6%
	4250 TEU		\$7.357	\$7.353	\$4	↔ 0,1%	\$7.604	-\$247	-3,2%	\$15.430	-8.073	-52,3%
Gearless	2500 TEU	12 mos	\$6.065	\$6.083	-\$18	↔ -0,3%	\$6.136	-\$71	-1,2%	\$12.410	-6.345	-51,1%
	2700 TEU		\$6.131	\$6.143	-\$12	↔ -0,2%	\$6.180	-\$49	-0,8%	\$13.286	-7.155	-53,9%
	3500 TEU		\$5.688	\$5.714	-\$26	↔ -0,5%	\$5.768	-\$80	-1,4%	\$13.513	-7.825	-57,9%
	4250 TEU		\$5.195	\$5.230	-\$35	↔ -0,7%	\$5.295	-\$100	-1,9%	\$14.006	-8.811	-62,9%



Disclaimer

The brand NewConTex is copyrighted by Vereinigung Hamburger Schiffsmakler und Schiffsagenten e.V. ("VHSS e.V.") and is protected by law. The NewConTex may be published only with the source reference © VHSS e.V. It is distributed to the general public for information purposes only and cannot be relied upon as a trading recommendation and does not constitute a solicitation to trade. The reported information is obtained from market sources. While every effort has been made to ensure the accuracy and the completeness of the NewConTex, VHSS e.V. makes no representations, conditions or warranties of any kind, express or implied, about the completeness, accuracy, reliability, or suitability of the NewConTex. Any reliance you place on the NewConTex is therefore strictly at your own risk. Neither VHSS e.V. nor any of its subsidiaries or affiliates nor any employee of the foregoing shall be liable or have any responsibility for any loss, liability or damage, cost or expense including without limitation, indirect or consequential loss or damage, or any loss or damage whatsoever arising from loss of data or profits arising out of, or in connection with, the use of and the reliance on the NewConTex, save for death or personal injury arising from VHSS e.V. negligence and fraudulent misrepresentation that cannot, under German law, be excluded.